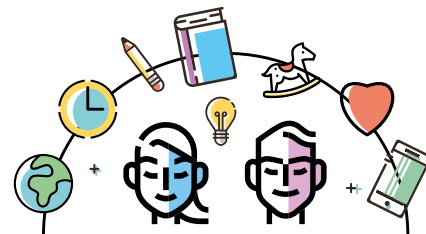


## PPT and special needs education for adults



If you are entitled to primary/lower secondary education for adults, you may also be entitled to some form of special education.

There are two different kinds of special education for adults within the Norwegian primary/ lower secondary education system.

One type of special education is intended for people who would not benefit sufficiently from standard schooling and the adult education programme cannot be adapted to your learning needs.

The other type of special education is available to people who need to improve or maintain basic skills. This kind of help may be appropriate after you complete an upper secondary education and you still need help, or if you have been injured or become ill and you need help to function in daily life.

The municipality and the PPT (the Educational and Psychological Counselling Service ) must both be involved in assessing what type of special education is suited to your needs, and they can provide advice. The municipality will make the final decision as to whether you are entitled to special education or not .

The PPT may engage in interdisciplinary collaboration at the local level, for example with the health services or NAV, and at the national level with e.g. Statped or psychiatric services. The PPT is bound by a duty of confidentiality.

### **What is the meaning of educational and psychological counselling service (ppt)**

A service that provides advice to schools, municipalities and county municipalities about how to organize learning for children, adolescents and adults with special needs.

### **Expert assessment**

This is a document issued by PPT that states whether you need special education or not and provides advice as to what kind of learning you should get.

### **Individual administrative decision**

A letter from the municipality that states whether you are entitled to special education or not and what measures this implies. You can always appeal such decisions.

### **Individual subject curriculum (IOP in Norwegian)**

An IOP shall include the learning goals and content of the special education and is an aid and tool for teachers.

---

## What can I expect from the municipality?

### *The municipality shall*

- ensure that your best interests are safeguarded
- hear what you have to say before they come to a decision in your case
- conduct interviews with you and perform the necessary assessments
- assess whether you need special education or not
- request that PPT provide an expert assessment if you request this, or if the institute of adult education thinks you need special education
- adopt an individual administrative decision that states whether or not you will receive special education, and in such cases what form this will take
- prepare an Individual Subject Curriculum (IOP)
- provide you with the prescribed special education as described in the individual administrative ruling and IOP
- prepare an annual written report on the special education you received and your progress and development
- ensure that you are provided with guidance on what assessment with and without grades entails, before you make a decision

## What can I do?

### *For adults receiving primary/lower secondary education*

- You are entitled to an assessment by your institute of adult education to examine whether you need special education or not
- You can discuss your concern with the PPT and the school prior to referral
- You shall be involved and provide your consent before the municipality asks PPT to assess your needs
- You shall be involved and provide your consent before the municipality decides whether you will receive special education
- You shall receive an annual written report on the special education you receive, and an assessment of your progress and development
- You can lodge an appeal if you are not provided with special education
- You can appeal the content, implementation or organization of the special education
- You may decide if you want exemption from assessment with grades in those subjects you are receiving special education

If you have a guardian, the guardian has the same rights as you have.

The right to special education for adults is regulated by the Education Act Section 4A-2.

See more in the Guide for special education for adults.